



Electrofusion Fittings Product Guide



Fusion Group
Chesterfield Site



Founded in 1971, Fusion Group is a multinational company with its headquarters and principal manufacturing site located in Chesterfield, England.

Fusion Group's Fusamatic Division is a world leader in the manufacture of electrofusion fittings for polyethylene pipe jointing. Fusion's fittings are used on gas and water infrastructure projects, landfill gas and leachate extraction systems, ground source heat installations and a vast range of industrial applications.



Over 60% of Fusion Group's UK manufactured output is sold into international markets through a global network of wholly-owned subsidiaries, joint-venture companies and agents. Contact details for Fusion's international sales team are provided on page 30.



In the UK, Fusion Group markets its manufactured products through its distribution arm, Fusion Provida. In addition to its National Sales Office in Chesterfield, Fusion Provida has a strategically located depot network which both sells products for utility infrastructure projects and hires out electrofusion control boxes, tooling and other polyethylene pipe jointing equipment. Contact details for Fusion's depot network are listed on page 31.

	Page
Introduction	
Fusamatic - the anatomy of a world class fitting	4
QBOX - the next generation electrofusion control box	6
Tooling	7
JointManager	7
Technical specifications for Fusamatic fittings	8
Type approval testing	9
The good guide to electrofusion	10
Electrofusion fittings	
Coupler	12
End cap	12
Reducer	13
90° elbow	13
45° elbow	14
22.5° elbow	14
Equal tee	14
Reducing tee	15
Flanged tee	15
Multiseal tapping tee - stackload (S/L) and underpart (U/P)	16
Flextee tapping tee - underpart (U/P)	19
Branch saddle - stackload (S/L) and underpart (U/P)	20
Transition coupler	23
Transition 90° elbow	24
Transition 45° elbow	25
Balloon saddle	26
Coupler and reducer with excess flow valve	26
Transition saddle	27
PE - steel transition piece (weldable)	27
Duckfoot bend	28
Hydrant branch saddle kit	29
Stub flange kit	29
International distribution	30
Batch manufacturing of electrofusion fittings	30
UK and ROI contacts and depot map	31

Fitting bar key

To specify product colour and polymer grade when ordering, the following codes should be used

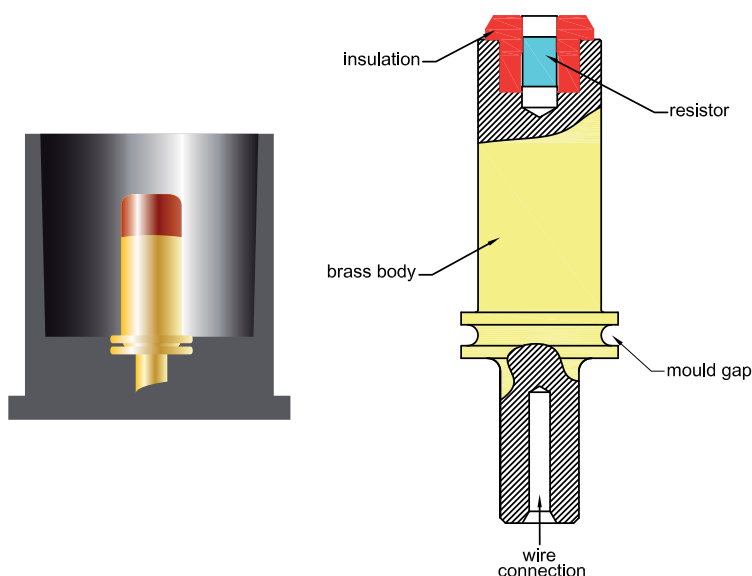
<div>Y</div> <div>Yellow PE80</div>	<div>BKH</div> <div>Black PE100</div>	Example:		
		32mm Coupler	Fitting Code	C*A32
		32mm Coupler	Yellow PE80	CYA32
		32mm Coupler	Black PE100	CBKHA32

Fusamatic - the anatomy of a world class fitting

Together, electrofusion fittings and polyethylene pipes enable utilities, designers and contractors to create fully welded pipe networks.

Joints are critical points in any pipe network. The production quality, reliability, and flexibility of Fusion's electrofusion fittings buys you peace of mind and certainty. Fusion has further extended the competitive advantage of its fittings by developing QBOX, the world's leading electrofusion control box, and JointManager, the first system which enables you to view and analyse your joint data at any time from anywhere in the world using the power of the internet. The ability to record and prove the integrity of your electrofusion joints is a major benefit for contractors and utilities alike.

Further information on QBOX and JointManager can be found on pages 6 and 7.



1) Fusamatic Pin

Invented by Fusion, the Fusamatic pin provides a totally automatic method for ensuring the correct welding parameters are used. Within each Fusamatic pin is a resistor. When the QBOX is connected to the fitting, the Fusamatic pin enables it to automatically identify the correct fusion time required to make the joint. All the operator has to do is press go!



2) Indicators

The pressure created by the expanding molten plastic in the jointing area inside the fitting during the electrofusion process will force out the indicator lugs. This is a visible sign that the necessary jointing pressure has been achieved.



3) Moulded-in welding parameters

Manual welding parameters are moulded into the body of all Fusion's fittings. Information provided includes fitting size, material (PE80 or PE100), applicable pipe SDRs, weld parameters, and pressure ratings for gas and water applications.



4) Permanently marked batch number

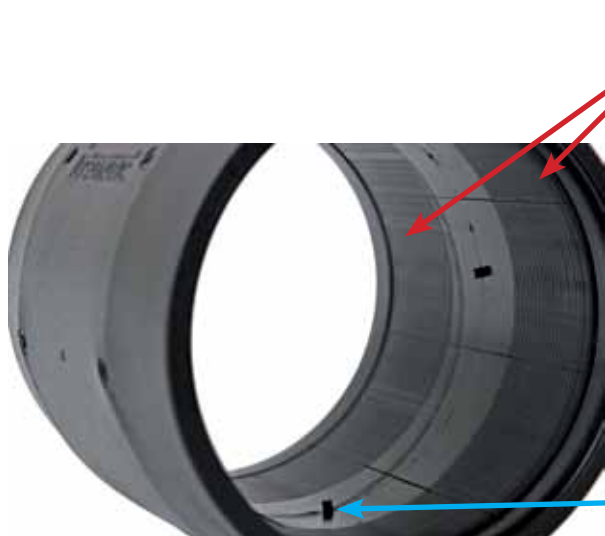
The injection mould batch number is just one of numerous quality control identifiers on each Fusamatic fitting. It is replicated on the fitting's barcode.



5) Barcode

Quality control is central to the success of Fusion's fittings. The barcode provides full traceability right down to the polymer batch; the raw material from which the fittings are manufactured.

The barcode also carries the welding parameters for use with electrofusion boxes equipped with a barcode scanner.



Element

To promote joint quality, all fusion elements are coated with polyethylene before being moulded into the fitting body.



Pipe stops

Fusamatic couplers have removable pipe stops. The stops ensure pipes cannot be inserted past the midpoint, but can be removed for use in, for example, repair situations.

QBOX - the next generation electrofusion control box

1) Screen

- Practical: hard-wearing, scratch-resistant polycarbonate.
- Flexible: true graphic display accommodates full range of international character sets. Eighteen languages currently supported including Chinese, Russian and Polish.
- Performance: high contrast, greater legibility.



2) User interface

- Control: status bar on screen at all times during the fusion process.



3) Keypad membrane

- Longevity: seamless membrane. Reduced risk of moisture penetration.
- Safety: hi-visibility reduces risk of site damage.



4) Casing

- Performance and durability: die-cast aluminium casing incorporating large cooling fins ensures high duty cycle performance.



5) Protective frame

- Resilient: powder coated.
- Practical: carrying handle and cable store.



6 & 7) Connections: Data retrieval

- Flexibility: printer socket, scanner socket, USB connector, SD card port.
- Capacity: stores up to 2000 joints.
- Reassurance: SD card acts like an aeroplane's black box. Almost indestructible data security.

Key specifications

- Power: 110V or 220/230V versions available
- Output: 80Amps
- IP rating: IP54
- Designed in accordance with ISO 12176 Part II and GIS ECE 1

Tooling

Fusion supplies a comprehensive range of tooling to help you achieve perfect electrofusion joints across all pipe diameters.

Tooling includes: scrapers, clamps, pipe cutters, squeeze-off and rerounding tools.

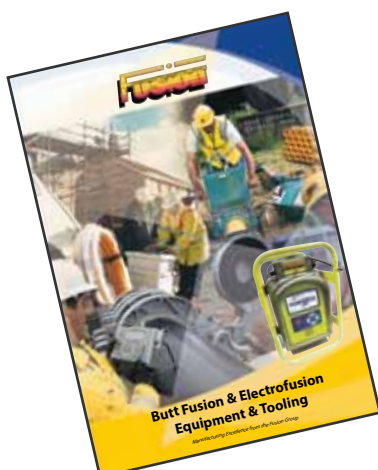
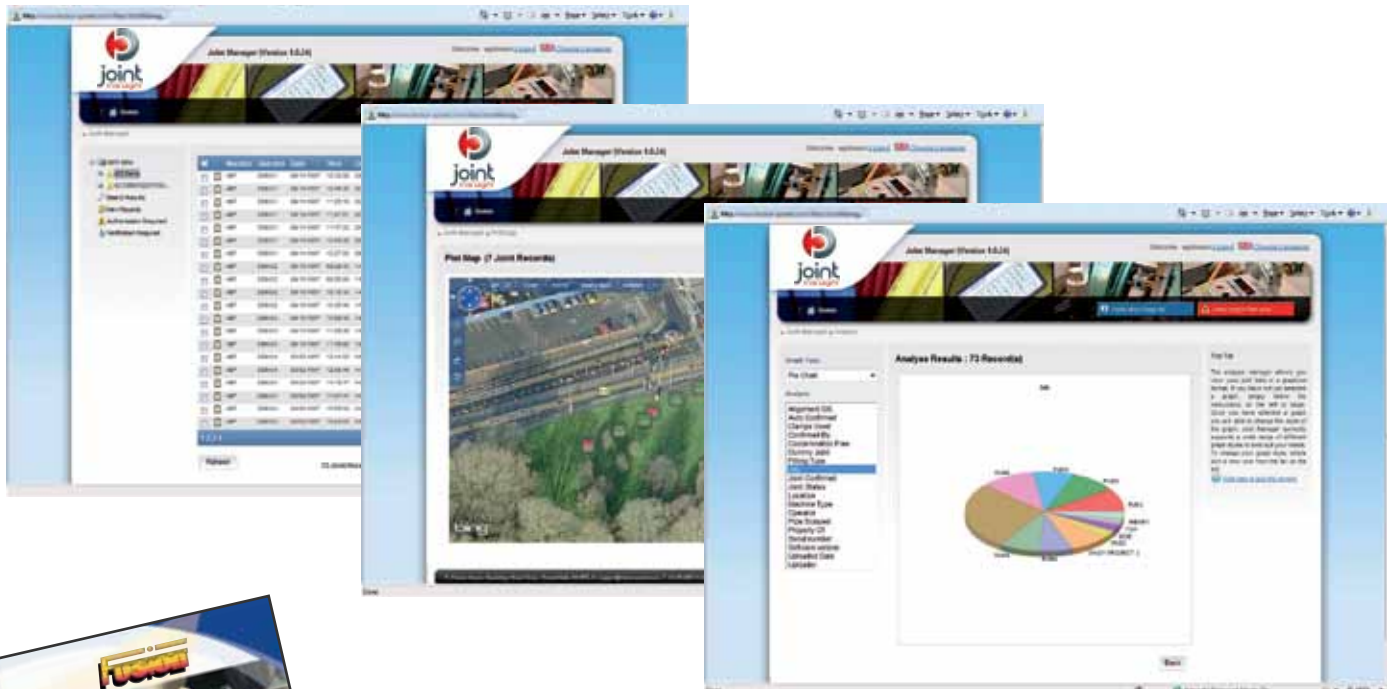


JointManager - giving you a competitive edge

In the 1990s, Fusion pioneered data transfer software which allowed joint data to be electronically downloaded and stored on a laptop or PC for analysis and review.

Today, JointManager enables you to electronically send your encrypted joint records to a secure password protected server which you can access any time of day or night via the JointManager web portal. The flexibility of the JointManager database structure means you can undertake a more rigorous analysis of your joint data than was possible with the previous Data Transfer System V2 software. Furthermore, you can monitor joint integrity trends over multiple projects. It's the ideal tool for identifying deviations from agreed procedures over time, the productivity of those using the machines and even the performance of the machine itself.

There is a growing recognition within utilities of the operational and financial value of ensuring joint integrity. JointManager's use of the internet means that joint records and analysis can be shared between contractors, consultants and utility managers.



You can find full details on QBOX, tooling and JointManager in the Fusion Equipment brochure which can be downloaded from www.fusiongroup.com or by emailing sales@fusionprovida.com, or ringing +44 (0)1246 455998.

Technical specifications for Fusamatic fittings

Quality control - 100% testing

All Fusamatic products are individually inspected using a unique computerised monitoring system that utilises advanced barcode technology. Each fitting is automatically inspected for coil resistance/continuity and correct fusion time as well as receiving a visual quality check by fully trained inspectors. This information is then logged on to a database that provides full traceability from the raw material to despatch and beyond.

Fusion Provida operates accredited quality systems against ISO 9001:2008 which ensure high quality products as well as being regularly audited by various institutions such as IIP, KIWA, BSI, DVGW, SAI Global and others.

Fusamatic fittings are tested, accredited and approved against many international performance standards including:

- GIS/PL2-4
- WIS 4-32-08
- BS EN1555-3
- BS EN12201-3
- BS ISO 8085
- BS ISO 4427

Pressure ratings

The maximum pressure rating for each type of electrofusion fitting is included in the detailed product specifications provided in pages 12 to 29. The table below provides a summary of the pressure ratings of the most common fittings.

FITTING TYPE	WATER (COLD) BLACK PE100	GAS (1) BLACK PE100	GAS (2) YELLOW PE80
Coupler	PN16	10 Bar	7 Bar
Elbow	PN16	10 Bar	7 Bar
Equal tee	PN16	10 Bar	7 Bar
Reducer	PN16	10 Bar	7 Bar
Tapping tee	PN16	10 Bar	6 Bar
Branch saddle	PN16	10 Bar	6 Bar
Hydrant products	PN16	n/a	n/a
Transition fittings	PN16	10 Bar	6 Bar

(1) Rated to 10 bar under EN-1555-3. A black PE100 Fusamatic fitting can be used in the UK if its use is signed off by a qualified gas engineer.

(2) Rated under GIS/PL2-4 to either 7 bar for class B or 6 bar for class C

SDR ratings

The appropriate pipe SDR rating for electrofusion fittings is in accordance with the tables below:

FITTING SIZES BELOW 63mm		FITTING SIZES 63mm AND ABOVE	
FITTING TYPE	PIPE SDR	FITTING TYPE	PIPE SDR
Coupler	11	Coupler	11 to 17.6
Elbow	11	Elbow	11 to 17.6
Reducer	11	Equal tee	11 to 17.6
Equal tee	11	Reducer	11 to 17.6
Tapping tee	11	Tapping tee *	11 to 17.6
Branch saddle	11	Branch saddle	11 to 17.6
Transition fittings	11	Hydrant products	11 to 17.6
		Transition fittings	11 to 17.6

* Tapping tees for 63mm mains only are not suitable for SDR17 pressurised pipe applications.

Testing can be carried out on SDR rated pipe outside the stated ranges if required. Please contact Fusion's national sales office on +44 (0)1246 455998 for details.

The Fusamatic system was primarily developed to meet the requirements of British Gas and the British water industry. Subsequently the Fusamatic system has become the preferred system in many countries worldwide. Comprehensive up-to-date details of approvals are available on request. To confirm the long term durability of the Fusamatic system, thorough testing is carried out within our laboratory.

The following information provides details of typical tests and indicates the test results against specification requirements.

Fusion Provida is an ISO 9001:2008 quality assessed, registered and certificated company by the British Standards Institution. Certificate No. FM 28179.

TYPICAL TEST	TEST CRITERIA	WATER SPECIFICATION	GAS SPECIFICATION
20°C Hydrostatic test (5000 hrs)	PE80 - 9.5 Mpa PE100 - 11 Mpa	N/A	GIS/PL2-4 GIS/PL2-6
80°C Hydrostatic test (1000 hrs)	PE80 - 4 Mpa PE100 - 5 Mpa	BS EN12201-3	BS EN1555-3 GIS/PL2-4 GIS/PL2-6
20°C Hydrostatic test (100 hrs)	PE80 - 10 Mpa PE100 - 12.4 Mpa	BS EN12201-3	BS EN1555-3 BS ISO 8085
80°C Hydrostatic test (170 hrs)	PE80 - 4.6 Mpa PE100 - 5.5 Mpa	BS EN12201-3	GIS/PL2-4 GIS/PL2-6 BS EN1555-3 BS ISO 8085
Joint strength/adhesion (socket OD>90mm)	All samples to have 75% ductility	WIS 4-32-08 BS EN12201-3	GIS/PL2-4 GIS/PL2-6 BS EN1555-3 BS ISO 8085
Joint strength/crush (socket OD≤90mm and saddles)	No brittle failure at joint interface	BS EN12201-3	GIS/PL2-4 GIS/PL2-6 BS EN1555-3 BS ISO 8085
Dimensional stability (9000 hrs)	Within specified tolerances after conditioning @ 30°C	n/a	GIS/PL2-4 GIS/PL2-6
Material tests (taken from joint interface after fusion cycle)	MFR, OIT and density within specified limits	BS EN12201-3	GIS/PL2-4 GIS/PL2-6 BS EN1555-3 BS ISO 8085
A.R.E.L. (tensile loading for sockets<75mm)	Specified load for 500 hrs @ 80°C	n/a	GIS/PL2-4 GIS/PL2-6
Tapping tee impact (100 J impact energy)	No cracking or leaking after impact	BS EN12201-3	GIS/PL2-4 GIS/PL2-6 BS EN1555-3 ISO 8085
Tapping tee cutter torque	<45Nm for 32mm O/L<110NM for 63mm O/L	n/a	GIS/PL2-4
Pressure loss across tapping tee	State K value	n/a	GIS/PL2-4
Branch saddle pull off	Outlet pipe to fail before fitting	Internal	Internal

Do's and Don'ts

PRE JOINTING CHECKS

- Use equipment that is clean, in good condition, regularly maintained and within required calibration/service.
- Ensure that cutters/blades and scrapers are clean and in good condition.
- Mechanical scrapers must be used wherever possible.
- Check that restraining clamps are in good condition.
- Check that you have somewhere clean and dry to place tools and equipment during the electrofusion process.
- Do not start the jointing process unless it can be completed in one go.

DO'S

- Understand the principles of electrofusion (refer to pipe manufacturer's details in van pack if necessary).
- Use a shelter and ground sheet, both in dry and wet conditions, to minimise contamination.
- Use pipe end covers wherever possible.
- Always enter your details into the electrofusion control box if the box requests it; your operator code and job code must be entered to allow full traceability.
- Always use clamps for alignment/restraining/re-rounding.
- Ensure control box voltage is compatible with fitting.
- Ensure pipe and fittings to be jointed are compatible with each other.
- Cut pipe ends square for all electrofusion socket fittings.
- Fully scrape pipe and/or spigot surfaces. (Secura-Line pipes need not be scraped prior to electrofusion if outer skin has been freshly peeled

and the core pipe is pristine. Should the peeled pipe ends become contaminated then they should be treated in the same way as standard PE pipe).

- Keep scraped pipe and/or spigot surfaces and fittings clean.
- Assemble joint and fuse immediately after scraping the pipe.
- If Fusion automatic fittings and boxes are being used, connect the red lead to the fitting terminal with the red pin and the black lead to the plain pin.
- In all cases check that the fusion time displayed by the control box matches the fusion time on the fitting. If different do not continue to weld. Replace with a new bagged fitting or enter fitting time manually.
- Ensure correct fusion and cooling times are observed and adhered to.
- Ensure all fusion indicators have risen. If not, cut out and make new weld.
- Drilling/tapping through fitting/pipe should only be carried out following the required quality inspections and pressure testing.
- Always ensure you mark the completed joint with the number issued from the electrofusion control box, along with the date. This is imperative for full traceability.

DON'TS

- Do not start any electrofusion joint unless it can be completed without interruption.
- Do not use an electrofusion box within an excavation.
- Under no circumstances should an attempt be made to carry out a second fusion cycle on any fitting. This is a WIS 4-32-08 requirement and must be adhered to.
- Incomplete, interrupted, failed or aborted fittings should ALWAYS be cut out, bagged and numbered with corresponding joint number for submission to a supervisor for inspection.

(CONTINUED....)

Do's and Don'ts

DON'TS (...CONTINUED)

- Do not use dirty or contaminated fittings, or those from split or torn bags or touch prepared surfaces.
- Do not leave fittings out of their protective bags or remove them from bags until immediately before use.
- Do not allow prepared fusion/jointing surfaces to become wet or damp.
- Do not remove clamps from fitting until cooling time has elapsed.
- Do not remove integral cutter from the stack/saddle once the main has been drilled.
- **IF EVER IN DOUBT - CUT IT OUT**

THE USE OF WET WIPES

The preferred position is to make electrofusion joints without the use of wet wipes. This guidance pertains as long as the pipes are freshly scraped, the fitting has just been debagged and the assembly and fusion of the joint follows immediately.

If any deviation from the above occurs, which may result in contamination of either the scraped pipe or the debagged fitting, then prescribed wet wipes can be used. Separate fresh wet wipes are to be used for the scraped pipes and the debagged fitting if both are contaminated. Whether wiping both scraped pipe or fitting or just one of them, wiped surfaces must be allowed to visibly dry (do not touch the wet surface), then the joint assembled and fused. Failure to allow the jointing surfaces to dry will increase the risk of voids at the weld interface.

N.B. In butt fusion jointing wet wipes are not used for cleaning pipes that have already been machined/trimmed.

HEALTH AND SAFETY

Fusion Provida makes every effort in the design and manufacture of its pipes, fittings and equipment to ensure safety in use. The following precautions are however worth bearing in mind:

- Never allow hot polyethylene to come into contact with the skin. In such an event cold water should be used to cool the affected area. Expert medical advice should be sought.
- Under no circumstances should any attempt be made to remove any material that becomes stuck on the skin without medical supervision as this would risk a more serious injury.
- Heavy pipes, fittings and equipment should not be handled without assistance or mechanical aid. The requirements of 'manual handling' legislation should be adhered to.
- Health and safety regulations insist upon the wearing of personal protective equipment such as gloves, safety glasses and safety boots whilst carrying out electrofusion joints.
- Care should be exercised, by taking normal precautions, when using electrical equipment on site, particularly in wet conditions.
- Normal precautions should be observed when handling electrical equipment and, for safety reasons, all 110v portable generator sets should be 'centre tapped' for site use +55/0/-55 volts.

ALWAYS REMEMBER THAT ALL JOINT RECORDS ARE AUTOMATICALLY STORED AND SHOULD BE DOWNLOADED ON A REGULAR BASIS TO ENSURE FULL TRACEABILITY AND INTEGRITY OF WORKMANSHIP.

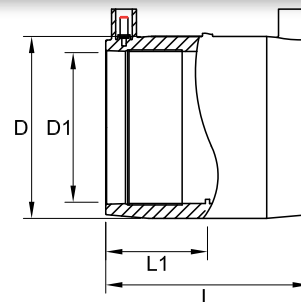
Electrofusion fittings

COUPLER

PE100 Black - Gas 10 Bar / Water PN16

PE80 Yellow - Gas 7 Bar

Please see technical specifications on page 8 with regard to gas fitting ratings



FITTING CODE	FITTING SIZE	L (mm)	L1 (mm)	D (mm)	D1 (mm)	FUSION TIME (secs)	COOLING TIME (mins)	WEIGHT (kg)	BOX QUANTITY
C*A20	20mm	77	37.5	29	20	35	3	0.033	80
C*A25	25mm	77	37.5	33.5	25	30	3	0.037	80
C*A32	32mm	77	37.5	43	32	45	3	0.057	75/100
C*A40	40mm	90	44	51.5	40	40	5	0.08	90
C*A50	50mm	91	44	61.5	50	90	5	0.096	70
C*A63	63mm	102	49	77	63	35	3	0.148	25/20
C*A75	75mm	120	59	92	75	50	5	0.22	45
C*A90	90mm	122	60	110	90	90	10	0.333	30/27
C*A110	110mm	144	70	133	110	160	10	0.52	18/10
C*A125	125mm	154	75	151	125	200	10	0.74	12
C*A140	140mm	181	89	176	140	200	10	1.45	6
C*A160	160mm	175	86	195	160	300	20	1.409	4
C*A180	180mm	185	91	220	180	360	20	1.906	4
C*A200	200mm	186	92	243	200	440	20	2.301	4
C*A225	225mm	222	109	276	225	600	30	4.15	2
C*A250	250mm	220	108	301	250	600	30	4.28	2
C*A280	280mm (40V)	260	127	345	280	600	30	8.32	1
C*A315	315mm (40V)	261	128	386	315	900	30	10.1	1
C*A355	355mm (40V)	260	126	437	355	900	30	12.3	1
C*A400	400mm (40V)	290	142	475	400	TBC	TBC	14.5	1

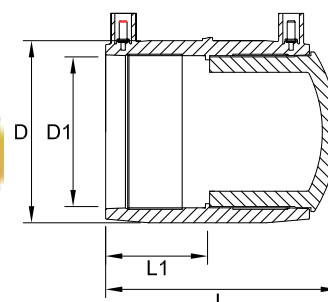
* for fitting code explanation see table on page 3

END CAP

PE100 Black - Gas 10 Bar / Water PN16

PE80 Yellow - Gas 7 Bar

Please see technical specifications on page 8 with regard to gas fitting ratings



FITTING CODE	FITTING SIZE	L (mm)	L1 (mm)	D (mm)	D1 (mm)	FUSION TIME (secs)	COOLING TIME (mins)	WEIGHT (kg)	BOX QUANTITY
EC*A20	20mm	82	37.5	29	20	35	3	0.041	80
EC*A25	25mm	82	37.5	33.5	25	30	3	0.048	80
EC*A32	32mm	84	37.5	46	32	45	3	0.073	75/100
EC*A40	40mm	97	44	51.5	40	40	5	0.102	90
EC*A50	50mm	101	44	61.5	50	90	5	0.15	70
EC*A63	63mm	115	49	77	63	35	5	0.226	25/20
EC*A75	75mm	125	59	92	75	50	5	0.553	45
EC*A90	90mm	138	60	110	90	90	10	0.521	30
EC*A110	110mm	164	70	133	110	160	10	0.97	18/10
EC*A125	125mm	175	75	151	125	200	10	1.24	10
EC*A140	140mm	236	89	176	140	200	10	2.25	6
EC*A160	160mm	202	85	196	160	300	20	2.21	4
EC*A180	180mm	214	91	220	180	360	20	2.32	4
EC*A200	200mm	215	108	243	200	440	30	4.2	2
EC*A225	225mm	222	109	276	225	600	30	7	2
EC*A250	250mm	220	108	301	250	600	30	8.1	2

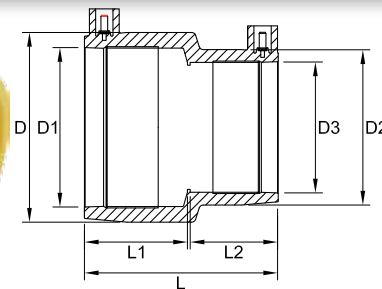
* for fitting code explanation see table on page 3

REDUCER

PE100 Black - Gas 10 Bar / Water PN16

PE80 Yellow - Gas 7 Bar

Please see technical specifications on page 8 with regard to gas fitting ratings



FITTING CODE	FITTING SIZE	L (mm)	L1 (mm)	D (mm)	D1 (mm)	L2 (mm)	D2 (mm)	D3 (mm)	FUSION TIME (secs)	COOLING TIME (mins)	WEIGHT (kg)	BOX QUANTITY
R*A25X20	25 x 20mm	77	38.5	34	25	36.5	29	20	35	3	0.035	80
R*A32X20	32 x 20mm	77	38.5	43	32	36.5	29	20	40	3	0.048	75
R*A32X25	32 x 25mm	77	38.5	43	32	36.5	34	25	30	3	0.052	75
R*A40X32	40 x 32mm	84	41	52	40	41	43	32	50	5	0.104	100
R*A50X32	50 x 32mm	91	46.5	62	50	41	44	32	60	5	0.087	80
R*A50X40	50 x 40mm	91	46.5	62	50	43	52	40	60	5	0.92	80
R*A63X32	63 x 32mm	102	52	78	63	44	44	32	90	5	0.13	60
R*A63X40	63 x 40mm	102	52.3	77	63	45	52	40	70	5	0.103	60
R*A63X50	63 x 50mm	102	52	78	63	48	62	50	120	10	0.138	60
R*A75X63	75 x 63mm	126	61	98	75	57	82	63	80	7	0.44	28
R*A90X63	90 x 63mm	122.5	61	109.5	90	55	79	63	80	5	0.3	35
R*A110X63	110 x 63mm	158	80	140	110	58	98	63	70	10	0.62	18
R*A110X90	110 x 90mm	137.5	70	134	110	62	111	90	120	10	0.535	20
R*A125X90	125 x 90mm	145	75	152	125	62.5	112	90	160	10	0.7	12
R*A160X90	160 x 90mm	192	96	200	160	73	117	90	200	22	1.44	4
R*A160X110	160 x 110mm	193	96	200	160	80	140	110	200	22	1.52	6
R*A180X125	180 x 125mm	221	101	216	180	83	157	125	220	10	2.09	4

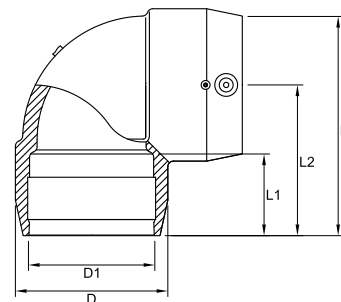
* for fitting code explanation see table on page 3

90° ELBOW

PE100 Black - Gas 10 Bar / Water PN16

PE80 Yellow - Gas 7 Bar

Please see technical specifications on page 8 with regard to gas fitting ratings



FITTING CODE	FITTING SIZE	L (mm)	L1 (mm)	L2 (mm)	D (mm)	D1 (mm)	FUSION TIME (secs)	COOLING TIME (mins)	WEIGHT (kg)	BOX QUANTITY
E*A20X90	20mm x 90deg	82	44	64	36	20	35	3	0.141	40
E*A25X90	25mm x 90deg	72.4	37.5	55.4	33.85	25	30	3	0.062	100
E*A32X90	32mm x 90deg	84	40	62	44	32	60	5	0.097	80
E*A40X90	40mm x 90deg	116	50	83	67	40	50	5	0.34	55
E*A50X90	50mm x 90deg	116	50	83	67	50	90	5	0.241	50
E*A63X90	63mm x 90deg	123.3	50	84.1	80	63	35	5	0.294	25
E*A75X90	75mm x 90deg	141	53	92	95	75	70	5	0.425	25
E*A90X90	90mm x 90deg	165	59	106	113	90	90	10	0.685	15
E*A110X90	110mm x 90deg	205	71	135	137	110	160	15	1.12	6
E*A125X90	125mm x 90deg	228	72	152	154	125	200	15	1.57	6
E*A160X90	160mm x 90deg	320	104	211	213	160	200	10	5	2
E*A180X90	180mm x 90deg	320	104	211	213	180	300	20	4.12	2

* for fitting code explanation see table on page 3

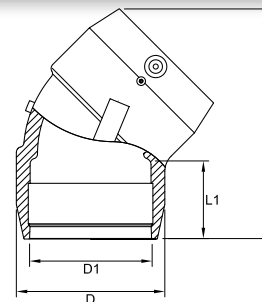
Electrofusion fittings

45° ELBOW

PE100 Black - Gas 10 Bar / Water PN16

PE80 Yellow - Gas 7 Bar

Please see technical specifications on page 8 with regard to gas fitting ratings



FITTING CODE	FITTING SIZE	L (mm)	L1 (mm)	D (mm)	D1 (mm)	FUSION TIME (secs)	COOLING TIME (mins)	WEIGHT (kg)	BOX QUANTITY
E*A32X45	32mm x 45deg	95	39	44	32	45	3	0.08	100
E*A40X45	40mm x 45deg	108	41.5	53	40	50	5	0.1	70
E*A50X45	50mm x 45deg	124	44.5	63.8	50	80	5	0.134	50
E*A63X45	63mm x 45deg	136.4	50	78.5	63	35	5	0.25	30
E*A75X45	75mm x 45deg	165	62	97	75	70	5	0.427	35
E*A90X45	90mm x 45deg	192	60	117	90	110	10	0.765	18
E*A110X45	110mm x 45deg	213	75	137	110	140	10	0.894	10
E*A125X45	125mm x 45deg	240	81	154	125	140	10	1.22	6
E*A160X45	160mm x 45deg	320	105	217	160	240	10	4.5	2
E*A180X45	180mm x 45deg	320	105	217	180	240	20	3.13	2

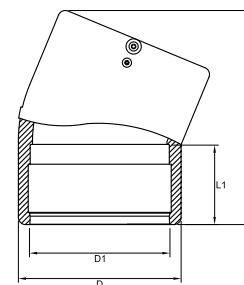
* for fitting code explanation see table on page 3

22.5° ELBOW

PE100 Black - Gas 10 Bar / Water PN16

PE80 Yellow - Gas 7 Bar

Please see technical specifications on page 8 with regard to gas fitting ratings



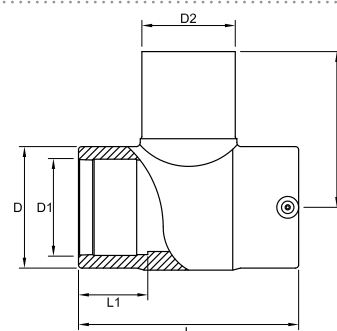
FITTING CODE	FITTING SIZE	L (mm)	L1 (mm)	D (mm)	D1 (mm)	FUSION TIME (secs)	COOLING TIME (mins)	WEIGHT (kg)	BOX QUANTITY
EBKHA180X22.5	180mm x 22.5deg	278	105	213	180	220	20	2.816	2

EQUAL TEE

PE100 Black - Gas 10 Bar / Water PN16

PE80 Yellow - Gas 7 Bar

Please see technical specifications on page 8 with regard to gas fitting ratings



FITTING CODE	FITTING SIZE	L (mm)	L1 (mm)	D (mm)	D1 (mm)	D2 (mm)	A (mm)	FUSION TIME (secs)	COOLING TIME (mins)	WEIGHT (kg)	BOX QUANTITY
ET*A20	20 x 20 x 20mm	98	35	44	20	20	78	30	3	0.13	75
ET*A25	25 x 25 x 25mm	98	35	44	25	25	78	35	3	0.12	75
ET*A32	32 x 32 x 32mm	98	35	44	32	32	78	50	3	0.1	50
ET*A40	40 x 40 x 40mm	131	44	52	40	40	91	80	5	0.163	18
ET*A50	50 x 50 x 50mm	141	43	64	50	50	104	90	5	0.23	25
ET*A63	63 x 63 x 63mm	156	50	82	63	63	114	40	5	0.445	20
ET*A75	75 x 75 x 75mm	174	60	97	75	75	126	120	10	0.597	12
ET*A90	90 x 90 x 90mm	201	55	115	90	90	143	110	8	0.97	7
ET*A110	110 x 110 x 110mm	239	73	139	110	110	167	140	10	1.67	6
ET*A125	125 x 125 x 125mm	262	79	156	125	125	196	200	15	2.3	4
ET*A160	160 x 160 x 160mm	313	89	200	160	160	211	360	20	4.06	2
ET*A180	180 x 180 x 180mm	330	89	224	180	180	231	360	19	5.3	2

* for fitting code explanation see table on page 3

REDUCING TEE

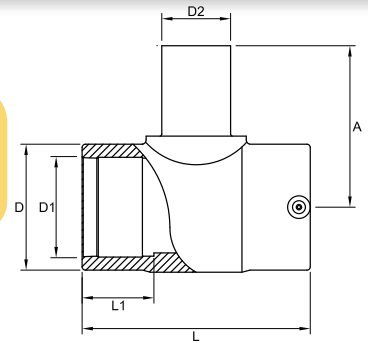
PE100 Black - Gas 10 Bar / Water PN16

PE80 Yellow - Gas 7 Bar

Please see technical specifications on page 8 with regard to gas fitting ratings



also available
in yellow



FITTING CODE	FITTING SIZE	L (mm)	L1 (mm)	D (mm)	D1 (mm)	D2 (mm)	A (mm)	FUSION TIME (secs)	COOLING TIME (mins)	WEIGHT (kg)	BOX QUANTITY
RT*A20X32	20 x 20 x 32mm	98	35	44	20	32	78	50	3	0.13	50
RT*A25X32	25 x 25 x 32mm	98	35	44	25	32	78	35	3	0.126	50
RT*A50X40	50 x 50 x 40mm	144	49	67	50	40	101	120	10	0.3	25
RT*A63X40	63 x 63 x 40mm	154	34	81	63	40	108	40	5	0.4	24
RT*A63X50	63 x 63 x 50mm	157	51	83	63	50	118	40	5	0.42	18
RT*A90X63	90 x 90 x 63mm	206	63	115.5	90	63	138	110	8	0.88	8
RT*A110X63	110 x 110 x 63mm	239	73	139	110	63	163	140	10	1.47	8
RT*A110X90	110 x 110 x 90mm	239	73	139	110	90	158	140	10	1.41	6
RT*A125X63	125 x 125 x 63mm	266	79	157	125	63	500	200	15	3	1
RT*A125X90	125 x 125 x 90mm	262	76	156	125	90	197	200	15	2.12	4
RT*A125X110	125 x 125 x 110mm	262	76	156	125	110	359	200	15	2.8	1
RT*A160X63	160 x 160 x 63mm	367	112	210	160	63	385	360	20	4.1	2
RT*A160X90	160 x 160 x 90mm	365	112	210	160	90	385	360	20	4.1	2
RT*A160X110	160 x 160 x 110mm	365	112	210	160	110	203	360	20	3.77	2
RT*A160X125	160 x 160 x 125mm	367	112	213	160	125	410	200	10	7.45	2
RT*A180X125	180 x 180 x 125mm	372	105	213	180	125	219	360	19	4.85	2

* for fitting code explanation see table on page 3

FLANGED TEE

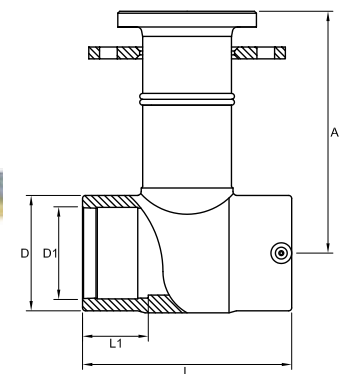
PE100 Black - Gas 10 Bar / Water PN16

PE80 Yellow - Gas 7 Bar

Please see technical specifications on page 8 with regard to gas fitting ratings



also available
in black



FITTING CODE	FITTING SIZE	L (mm)	L1 (mm)	D (mm)	D1 (mm)	A (mm)	FUSION TIME (secs)	COOLING TIME (mins)	WEIGHT (kg)	BOX QUANTITY
FT*A63X50	63mm x 50 NP16	174	61	82	63	251	80	5	3.08	1
FT*A90X50	90mm x 50 NP16	210	65	115	90	307	110	8	5.64	1
FT*A90X80	90mm x 80 NP16	210	65	115	90	307	120	10	6.51	1
FT*A110X100	110mm x 100 NP16	265	88	139	110	353	200	10	8.02	1
FT*A125X80	125mm x 80 NP16	266	79	156	125	526	200	15	7.81	1
FT*A125X100	125mm x 100 NP16	266	79	156	125	353	220	10	7.32	1
FT*A160X100	160mm x 100 NP16	372	112	200	160	596	200	10	8.1	1
FT*A160X150	160mm x 150 NP16	372	112	200	160	436	200	10	9.4	1
FT*A180X80	180mm x 80 NP16	372	112	224	180	766	200	20	7.81	1
FT*A180X100	180mm x 100 NP16	372	112	224	180	575	200	20	9	1
FT*A180X150	180mm x 150 NP16	372	112	224	180	436	200	20	7.4	1

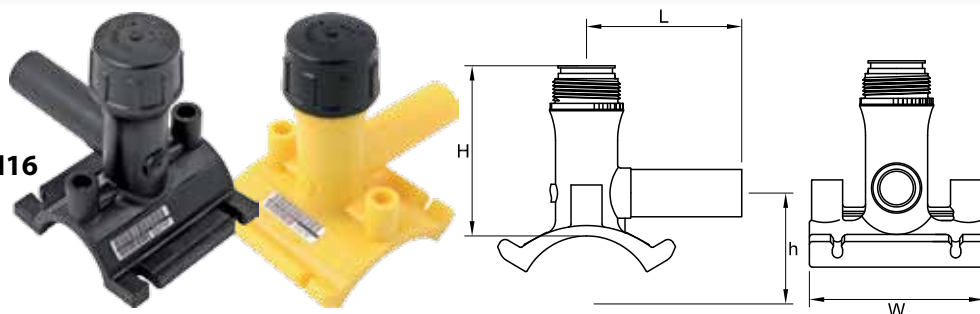
* for fitting code explanation see table on page 3

MULTISEAL TAPPING TEE S/L

PE100 Black - Gas 10 Bar / Water PN16

PE80 Yellow - Gas 6 Bar

Please see technical specifications on page 8 with regard to gas fitting ratings



FITTING CODE	FITTING SIZE	L (mm)	H (mm)	h (mm)	W (mm)	FUSION TIME (secs)	COOLING TIME (mins)	WEIGHT (kg)	BOX QUANTITY
MT*A63X20	63 x 20mm	105	119	62	120	80	10	0.34	15
MT*A63X25	63 x 25mm	105	119	62	120	80	10	0.34	15
MT*A63X32	63 x 32mm	105	119	62	120	80	10	0.34	15
MT*A75X20	75 x 20mm	105	110	77	120	100	10	0.35	15
MT*A75X25	75 x 25mm	105	110	77	120	100	10	0.35	15
MT*A75X32	75 x 32mm	105	110	77	120	100	10	0.35	15
MT*A90X20	90 x 20mm	105	110	77	120	100	10	0.35	15
MT*A90X25	90 x 25mm	105	110	77	120	100	10	0.35	15
MT*A90X32	90 x 32mm	105	110	77	120	100	10	0.35	15
MT*A110X20	110 x 20mm	105	117	87	120	80	10	0.37	15
MT*A110X25	110 x 25mm	105	117	87	120	80	10	0.37	15
MT*A110X32	110 x 32mm	105	117	87	120	80	10	0.37	15
MT*A125X20	125 x 20mm	105	117	95	120	80	10	0.38	15
MT*A125X25	125 x 25mm	105	117	95	120	80	10	0.38	15
MT*A125X32	125 x 32mm	105	117	95	120	80	10	0.38	15
MT*A160X20	160 x 20mm	105	122	112	120	100	10	0.39	15
MT*A160X25	160 x 25mm	105	122	112	120	100	10	0.39	15
MT*A160X32	160 x 32mm	105	122	112	120	100	10	0.39	15
MT*A180X20	180 x 20mm	105	122	122	120	100	10	0.38	15
MT*A180X25	180 x 25mm	105	122	122	120	100	10	0.38	15
MT*A180X32	180 x 32mm	105	122	122	120	100	10	0.38	15
MT*A200X20	200 x 20mm	105	122	132	120	100	10	0.38	15
MT*A200X25	200 x 25mm	105	122	132	120	100	10	0.38	15
MT*A200X32	200 x 32mm	105	122	132	120	100	10	0.38	15
MT*A225X20	225 x 20mm	105	122	145	120	100	10	0.36	15
MT*A225X25	225 x 25mm	105	122	145	120	100	10	0.36	15
MT*A225X32	225 x 32mm	105	122	145	120	100	10	0.36	15
MT*A250X20	250 x 20mm	105	122	158	118	100	10	0.36	15
MT*A250X25	250 x 25mm	105	122	158	118	100	10	0.36	15
MT*A250X32	250 x 32mm	105	122	158	118	100	10	0.36	15
MT*A280X32 †	280 x 32mm	TBC	TBC	TBC	TBC	TBC	TBC	TBC	TBC
MT*A315X32 †	315 x 32mm	TBC	TBC	TBC	TBC	TBC	TBC	TBC	TBC
MT*A355X32 †	355 x 32mm	TBC	TBC	TBC	TBC	TBC	TBC	TBC	TBC

* for fitting code explanation see table on page 3

† Under development



To order Multiseal with the optional cutter tube simply add 'T' to the fitting code e.g. MTBKHA63X20T. The tube works in conjunction with an internal D-ring seal in the body of the fitting to deliver safe live connections.



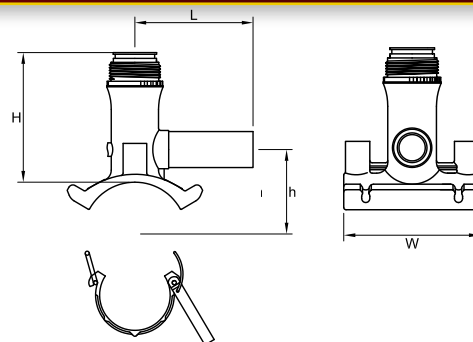
To obtain a copy of the Multiseal brochure please contact our National Sales Office on +44 (0)1246 455998, email sales@fusionprovida.com, or visit our website www.fusiongroup.com

MULTISEAL TAPPING TEE U/P

PE100 Black - Gas 10 Bar / Water PN16

PE80 Yellow - Gas 6 Bar

Please see technical specifications on page 8 with regard to gas fitting ratings



FITTING CODE	FITTING SIZE	L (mm)	H (mm)	h (mm)	W (mm)	FUSION TIME (secs)	COOLING TIME (mins)	WEIGHT (kg)	BOX QUANTITY
MTBKHA40X20U	40 x 20mm	105	110	27	120	40	3	0.25	10
MTBKHA40X25U	40 x 25mm	105	110	27	120	40	3	0.25	10
MTBKHA40X32U	40 x 32mm	105	110	27	120	40	3	0.25	10
MTBKHA50X20U	50 x 20mm	105	110	27	120	40	3	0.26	10
MTBKHA50X25U	50 x 25mm	105	110	27	120	40	3	0.26	10
MTBKHA50X32U	50 x 32mm	105	110	27	120	40	3	0.26	10
MTBKHA63X20U	63 x 20mm	105	119	62	120	80	10	0.6	10
MTBKHA63X25U	63 x 25mm	105	119	62	120	80	10	0.6	10
MTBKHA63X32U	63 x 32mm	105	119	62	120	80	10	0.6	10
MTBKHA75X20U	75 x 20mm	105	110	77	120	90	10	0.646	10
MTBKHA75X25U	75 x 25mm	105	110	77	120	90	10	0.646	10
MTBKHA75X32U	75 x 32mm	105	110	77	120	90	10	0.646	10
MTBKHA90X20U	90 x 20mm	105	110	77	120	90	10	0.646	10
MTBKHA90X25U	90 x 25mm	105	110	77	120	90	10	0.646	10
MTBKHA90X32U	90 x 32mm	105	110	77	120	90	10	0.646	10
MTBKHA110X20U	110 x 20mm	105	117	87	120	80	10	0.682	10
MTBKHA110X25U	110 x 25mm	105	117	87	120	80	10	0.682	10
MTBKHA110X32U	110 x 32mm	105	117	87	120	80	10	0.682	10
MTBKHA125X20U	125 x 20mm	105	117	95	120	80	10	0.67	10
MTBKHA125X25U	125 x 25mm	105	117	95	120	80	10	0.67	10
MTBKHA125X32U	125 x 32mm	105	117	95	120	80	10	0.67	10
MTBKHA160X20U	160 x 20mm	105	122	112	120	100	10	0.69	10
MTBKHA160X25U	160 x 25mm	105	122	112	120	100	10	0.69	10
MTBKHA160X32U	160 x 32mm	105	122	112	120	100	10	0.69	10
MTBKHA180X20U	180 x 20mm	105	122	122	120	100	10	0.68	10
MTBKHA180X25U	180 x 25mm	105	122	122	120	100	10	0.68	10
MTBKHA180X32U	180 x 32mm	105	122	122	120	100	10	0.68	10
MTBKHA200X20U	200 x 20mm	105	122	132	120	100	10	0.73	10
MTBKHA200X25U	200 x 25mm	105	122	132	120	100	10	0.73	10
MTBKHA200X32U	200 x 32mm	105	122	132	120	100	10	0.73	10
MTBKHA225X20U	225 x 20mm	105	122	122	120	100	10	0.78	10
MTBKHA225X25U	225 x 25mm	105	122	122	120	100	10	0.78	10
MTBKHA225X32U	225 x 32mm	105	122	122	120	100	10	0.78	10



To order Multiseal with the optional cutter tube simply add 'T' to the fitting code e.g. MTBKHA63X20UT. The tube works in conjunction with an internal D-ring seal in the body of the fitting to deliver safe live connections.

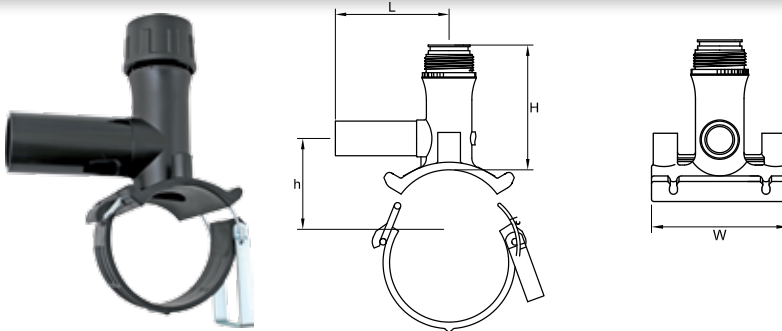


To obtain a copy of the Multiseal brochure please contact our National Sales Office on +44 (0)1246 455998, email sales@fusionprovida.com, or visit our website www.fusiongroup.com

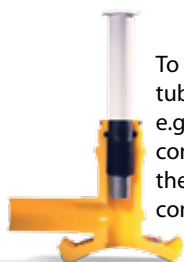
MULTISEAL TAPPING TEE U/P

PE100 Black - Gas 10 Bar / Water PN16

Please see technical specifications on page 8 with regard to gas fitting ratings



FITTING CODE	FITTING SIZE	L (mm)	H (mm)	h (mm)	W (mm)	FUSION TIME (secs)	COOLING TIME (mins)	WEIGHT (kg)	BOX QUANTITY
MTBKHA63X40U	63 x 40mm	165	155	59.5	146	50	10	0.594	5
MTBKHA63X50U	63 x 50mm	165	155	59.5	146	50	10	0.594	5
MTBKHA63X63U	63 x 63mm	165	155	59.5	146	50	10	0.594	5
MTBKHA75X40U	75 x 40mm	165	152	57	146	100	10	0.848	5
MTBKHA75X50U	75 x 50mm	165	152	57	146	100	10	0.848	5
MTBKHA75X63U	75 x 63mm	165	152	57	146	100	10	0.848	5
MTBKHA90X40U	90 x 40mm	165	152	57	146	100	10	0.848	5
MTBKHA90X50U	90 x 50mm	165	152	57	146	100	10	0.848	5
MTBKHA90X63U	90 x 63mm	165	152	57	146	100	10	0.848	5
MTBKHA110X40U	110 x 40mm	165	176	105	146	100	10	0.896	5
MTBKHA110X50U	110 x 50mm	165	176	105	146	100	10	0.896	5
MTBKHA110X63U	110 x 63mm	165	176	105	146	100	10	0.896	5
MTBKHA125X40U	125 x 40mm	165	112	112	146	100	10	0.9	5
MTBKHA125X50U	125 x 50mm	165	112	112	146	100	10	0.9	5
MTBKHA125X63U	125 x 63mm	165	112	112	146	100	10	0.9	5
MTBKHA160X40U	160 x 40mm	165	182	137	146	100	10	0.901	5
MTBKHA160X50U	160 x 50mm	165	182	137	146	100	10	0.901	5
MTBKHA160X63U	160 x 63mm	165	182	137	146	100	10	0.901	5
MTBKHA180X40U	180 x 40mm	165	183	147	146	100	10	1.15	5
MTBKHA180X50U	180 x 50mm	165	183	147	146	100	10	1.15	5
MTBKHA180X63U	180 x 63mm	165	183	147	146	100	10	1.15	5
MTBKHA200X40U	200 x 40mm	165	183	157	146	100	10	1.128	5
MTBKHA200X50U	200 x 50mm	165	183	157	146	100	10	1.128	5
MTBKHA200X63U	200 x 63mm	165	183	157	146	100	10	1.128	5
MTBKHA225X40U	225 x 40mm	165	183	169	146	100	10	1.128	5
MTBKHA225X50U	225 x 50mm	165	183	169	146	100	10	1.128	5
MTBKHA225X63U	225 x 63mm	165	183	169	146	100	10	1.128	5



To order Multiseal with the optional cutter tube simply add 'T' to the fitting code e.g. MTBKHA63X40UT. The tube works in conjunction with an internal D-ring seal in the body of the fitting to deliver safe live connections.

To obtain a copy of the Multiseal brochure please contact our National Sales Office on **+44 (0)1246 455998**, email **sales@fusionprovida.com**, or visit our website **www.fusiongroup.com**

FLEXTEE TAPPING TEE U/P

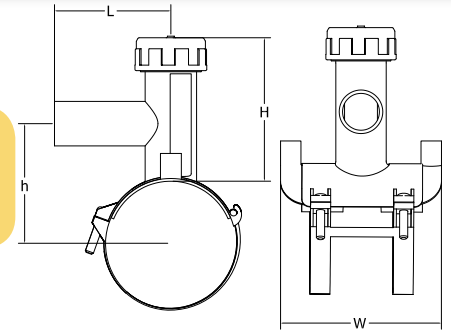
PE100 Black - Gas 10 Bar / Water PN16

PE80 Yellow - Gas 6 Bar

Please see technical specifications on page 8 with regard to gas fitting ratings



also available
in yellow¹



FITTING CODE	FITTING SIZE	L (mm)	H (mm)	h (mm)	W (mm)	FUSION TIME (secs)	COOLING TIME (mins)	WEIGHT (kg)	BOX QUANTITY
FLT*A63X20U	63 x 20mm	83	100	59.5	119	110	10	0.221	12
FLT*A63X25U	63 x 25mm	83	100	59.5	119	110	10	0.221	12
FLT*A63X32U	63 x 32mm	83	100	59.5	119	110	10	0.221	12
FLTBKHA75X20U	75 x 20mm	83	100	65.5	119	110	10	0.221	12
FLTBKHA75X25U	75 x 25mm	83	100	65.5	119	110	10	0.221	12
FLTBKHA75X32U	75 x 32mm	83	100	65.5	119	110	10	0.221	12
FLT*A90X20U	90 x 20mm	83	100	73	119	110	10	0.222	10
FLT*A90X25U	90 x 25mm	83	100	73	119	110	10	0.222	10
FLT*A90X32U	90 x 32mm	83	100	73	119	110	10	0.222	10
FLTBKHA110X20U	110 x 20mm	83	100	83	119	120	10	0.222	10
FLTBKHA110X25U	110 x 25mm	83	100	83	119	120	10	0.222	10
FLTBKHA110X32U	110 x 32mm	83	100	83	119	120	10	0.222	10
FLT*A125X20U	125 x 20mm	83	100	90.5	119	120	10	0.231	8
FLT*A125X25U	125 x 25mm	83	100	90.5	119	120	10	0.231	8
FLT*A125X32U	125 x 32mm	83	100	90.5	119	120	10	0.231	8
FLTBKHA160X20U	160 x 20mm	83	100	108	119	140	10	0.242	8
FLTBKHA160X25U	160 x 25mm	83	100	108	119	140	10	0.242	8
FLTBKHA160X32U	160 x 32mm	83	100	108	119	140	10	0.242	8
FLT*A180X20U	180 x 20mm	83	100	118	119	140	10	0.242	8
FLT*A180X25U	180 x 25mm	83	100	118	119	140	10	0.242	8
FLT*A180X32U	180 x 32mm	83	100	118	119	140	10	0.242	8

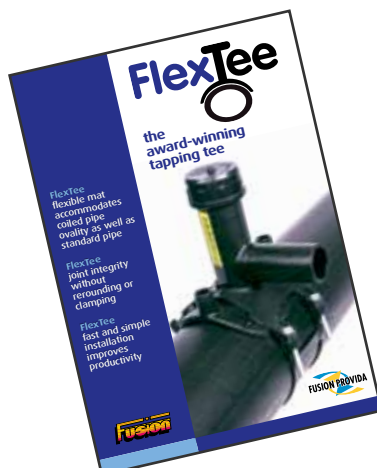
* for fitting code explanation see table on page 3

¹ limited range of yellow PE80 products available in the spring

The following products are currently undergoing development, testing and approval and will be available late summer:

40 x 20mm	225 x 20mm
40 x 25mm	225 x 25mm
40 x 32mm	225 x 32mm
50 x 20mm	250 x 20mm
50 x 25mm	250 x 25mm
50 x 32mm	250 x 32mm
200 x 20mm	280 x 20mm
200 x 25mm	280 x 25mm
200 x 32mm	280 x 32mm

FlexTee



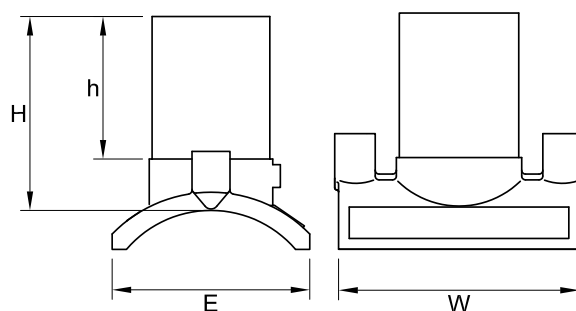
To obtain a copy of the FlexTee brochure please contact our National Sales Office on +44 (0)1246 455998, email sales@fusionprovida.com, or visit our website www.fusiongroup.com

Electrofusion fittings

BRANCH SADDLE S/L

PE100 Black - Gas 10 Bar / Water PN16

Please see technical specifications on page 8 with regard to gas fitting ratings

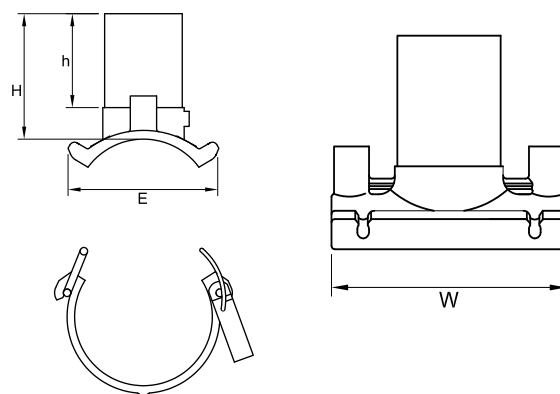


FITTING CODE	FITTING SIZE	H (mm)	h (mm)	W (mm)	E (mm)	FUSION TIME (secs)	COOLING TIME (mins)	WEIGHT (kg)	BOX QUANTITY
MBBKHA250X63	250 x 63mm	140	73	146	122	110	10	0.35	10
MBBKHA280X63	280 x 63mm	140	73	146	122	120	10	0.35	10
MBBKHA315X63	315 x 63mm	140	73	146	122	120	10	0.35	10
MBBKHA355X63	355 x 63mm	140	73	146	122	120	10	0.35	10

BRANCH SADDLE U/P

PE100 Black - Gas 10 Bar / Water PN16

Please see technical specifications on page 8 with regard to gas fitting ratings

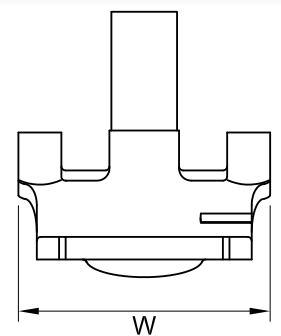
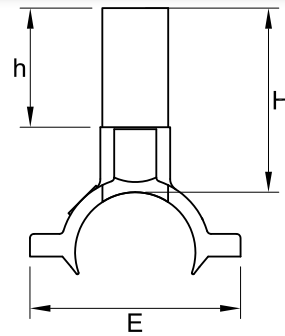


FITTING CODE	FITTING SIZE	H (mm)	h (mm)	W (mm)	E (mm)	FUSION TIME (secs)	COOLING TIME (mins)	WEIGHT (kg)	BOX QUANTITY
MBBKHA63X40U	63 x 40mm	115	75	147	119	100	10	0.475	10
MBBKHA63X50U	63 x 50mm	115	75	147	119	100	10	0.475	10
MBBKHA63X63U	63 x 63mm	115	75	147	119	100	10	0.475	10
MBBKHA75X40U	75 x 40mm	115	75	147	119	100	10	0.475	10
MBBKHA75X50U	75 x 50mm	115	75	147	119	100	10	0.475	10
MBBKHA75X63U	75 x 63mm	115	75	147	119	100	10	0.475	10
MBBKHA90X40U	90 x 40mm	115	75	147	122	100	10	0.588	10
MBBKHA90X50U	90 x 50mm	115	75	147	122	100	10	0.588	10
MBBKHA90X63U	90 x 63mm	115	75	147	122	100	10	0.588	10
MBBKHA110X40U	110 x 40mm	118	75	147	122	100	10	0.596	10
MBBKHA110X50U	110 x 50mm	118	75	147	122	100	10	0.596	10
MBBKHA110X63U	110 x 63mm	118	75	147	122	100	10	0.596	10
MBBKHA125X40U	125 x 40mm	118	75	147	122	100	10	0.608	10
MBBKHA125X50U	125 x 50mm	118	75	147	122	100	10	0.608	10
MBBKHA125X63U	125 x 63mm	118	75	147	122	100	10	0.608	10
MBBKHA160X40U	160 x 40mm	125	75	147	122	100	10	0.652	10
MBBKHA160X50U	160 x 50mm	125	75	147	122	100	10	0.652	10
MBBKHA160X63U	160 x 63mm	125	75	147	122	100	10	0.652	10
MBBKHA180X40U	180x 40 mm	125	75	147	122	100	10	0.672	10
MBBKHA180X50U	180x 50 mm	125	75	147	122	100	10	0.672	10
MBBKHA180X63U	180x 63 mm	125	75	147	122	100	10	0.672	10
MBBKHA200X40U	200x 40 mm	125	75	147	122	100	10	0.677	10
MBBKHA200X50U	200x 50 mm	125	75	147	122	100	10	0.677	10
MBBKHA200X63U	200x 63 mm	125	75	147	122	100	10	0.677	10
MBBKHA225X40U	225x 40 mm	125	75	147	122	100	10	0.706	10
MBBKHA225X50U	225x 50 mm	125	75	147	122	100	10	0.706	10
MBBKHA225X63U	225x 63 mm	125	75	147	122	100	10	0.706	10

BRANCH SADDLE U/P

PE100 Black - Gas 10 Bar / Water PN16

Please see technical specifications on page 8 with regard to gas fitting ratings

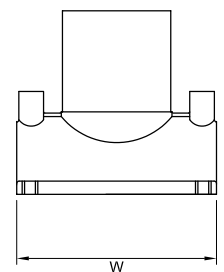
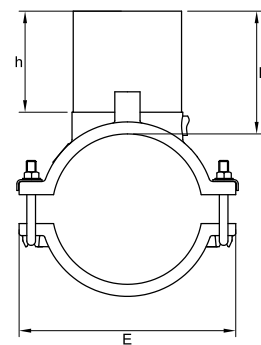


FITTING CODE	FITTING SIZE	H (mm)	h (mm)	W (mm)	E (mm)	FUSION TIME (secs)	COOLING TIME (mins)	WEIGHT (kg)	BOX QUANTITY
BBKHA40X20U	40 x 20 mm	93	51	103	83	35	5	0.15	25
BBKHA40X25U	40 x 25 mm	90	52	103	83	35	5	0.15	20
BBKHA40X32U	40 x 32 mm	90	57	103	83	35	5	0.15	20
BBKHA63X20U	63 x 20 mm	90	50	122	105	140	10	0.25	15
BBKHA63X25U	63 x 25 mm	106	59	122	105	140	10	0.25	15
BBKHA63X32U	63 x 32 mm	106	59	122	105	140	10	0.25	15
BBKHA63X40U	63 x 40 mm	106	59	122	105	TBC	TBC	0.3	10
BBKHA63X50U	63 x 50 mm	106	59	122	105	TBC	TBC	0.35	10
BBKHA63X63U	63 x 63 mm	106	59	122	105	TBC	TBC	0.35	10
BBKHA90X20U	90 x 20mm	91	51	136	133	140	10	0.41	10
BBKHA90X25U	90 x 25mm	91	51	136	133	140	10	0.42	10
BBKHA90X32U	90 x 32mm	91	51	136	133	140	10	0.42	10
BBKHA90X40U	90 x 40mm	105	69	136	133	140	10	0.43	10
BBKHA90X50U	90 x 50mm	105	82	136	133	140	10	0.45	10
BBKHA90X63U	90 x 63mm	105	88	136	133	140	10	0.48	10

BRANCH SADDLE U/P

PE100 Black - Gas 10 Bar / Water PN16

Please see technical specifications on page 8 with regard to gas fitting ratings



FITTING CODE	FITTING SIZE	H (mm)	h (mm)	W (mm)	E (mm)	FUSION TIME (secs)	COOLING TIME (mins)	WEIGHT (kg)	BOX QUANTITY
BBKHA90X90U	90 x 90mm	124	84	144	154	160	10	0.605	5
BBKHA110X90U	110 x 90mm	121	84	165	180	120	10	0.602	5
BBKHA125X90U	125 x 90mm	114	84	165	180	120	10	0.555	5
BBKHA160X90U	160 x 90mm	110	84	215	236	120	10	1.69	2
BBKHA180X90U	180 x 90mm	100	84	215	236	120	10	1.651	2
BBKHA200X90U	200 x 90mm	115	84	165	263	120	10	4.15	3
BBKHA225X90U	225 x 90mm	113	84	165	291	120	10	4.25	2
BBKHA250X90U	250 x 90mm	120	84	165	317	120	10	4.32	2
BBKHA160X110U	160 x 110mm	131	98	217	236	120	10	1.731	2
BBKHA180X110U	180 x 110mm	121	98	217	236	120	10	1.672	2
BBKHA180X125U	180 x 125mm	121	98	217	236	120	10	1.704	2
BBKHA225X125U	225 x 125mm	123	98	310	327	500	30	6.6	1
BBKHA250X125U	250 x 125mm	110	98	310	327	500	30	7.8	1

Electrofusion fittings

FLANGED BRANCH SADDLE U/P¹

PE100 Black - Gas 10 Bar / Water PN16

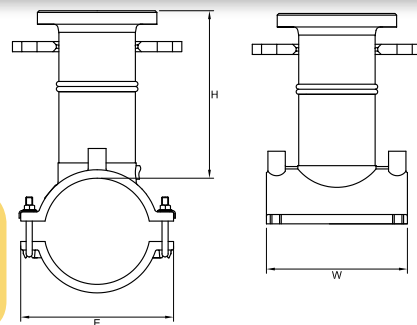
PE80 Yellow - Gas 6 Bar

Please see technical specifications on page 8 with regard to gas fitting ratings

¹ For use with under pressure large diameter drill



also available in yellow



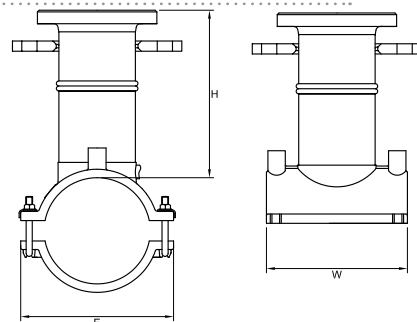
FITTING CODE	FITTING SIZE	H (mm)	W (mm)	E (mm)	FUSION TIME (secs)	COOLING TIME (mins)	WEIGHT (kg)	BOX QUANTITY
FB*A110X80U	110 x 80 NP16	242	165	180	120	10	1.1	1
FB*A125X80U	125 x 80 NP16	242	165	180	120	10	1.05	1
FB*A160X80U	160 x 80 NP16	194	215	236	120	10	2.18	1
FB*A160X100U	160 x 100 NP16	194	215	236	120	10	2.41	1
FB*A180X80U	180 x 80 NP16	242	215	236	120	10	2.04	1
FB*A180X100U	180 x 100 NP16	216	215	236	120	10	2.37	1
FB*A200X80U	200 x 80 NP16	188	165	263	120	10	4.64	1
FB*A225X80U	225 x 80 NP16	188	165	291	120	10	4.74	1
FB*A225X100DP	225 x 100 NP16	190	310	327	500	30	11	1
FB*A250X80U	250 x 80 NP16	193	165	317	120	10	4.81	1
FB*A250X100DP	250 x 100 NP16	190	310	327	500	30	11	1

* for fitting code explanation see table on page 3

FLANGED BRANCH SADDLE U/P - FASTCUT²

PE100 Black - Gas / Water

Please see technical specifications on page 8 with regard to gas fitting ratings



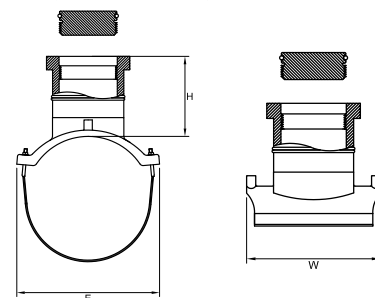
FITTING CODE	FITTING SIZE	H (mm)	W (mm)	E (mm)	FUSION TIME (secs)	COOLING TIME (mins)	WEIGHT (kg)	BOX QUANTITY
FBBKHM250X200DP	250 x 200 NP16	190	310	320	360	20	16	1
FBBKHA315X150DP	315 x 150 NP16	190	300	360	440	30	15	1
FBBKHM315X250DP	315 x 250 NP16	190	420	385	600	30	25	1
FBBKHA355X150DP	355 x 150 NP16	190	300	360	440	30	15	1
FBBKHM355X250DP	355 x 250 NP16	190	420	425	600	30	25	1
FBBKHM400X150DP	400 x 150 NP16	215	300	360	440	30	15	1
FBBKHM400X250DP	400 x 250 NP16	215	420	440	600	30	26.5	1
FBBKHM450X250DP	450 x 250 NP16	215	420	530	440	30	25	1
FBBKHM500X250DP	500 x 250 NP16	215	420	580	440	30	25	1

FLANGED BRANCH SADDLE U/P - FASTCUT² FLOWSTOP³

PE100 Black - Gas 10 Bar / Water PN16

Please see technical specifications on page 8 with regard to gas fitting ratings

new



FITTING CODE	FITTING SIZE	H (mm)	W (mm)	E (mm)	FUSION TIME (secs)	COOLING TIME (mins)	WEIGHT (kg)	BOX QUANTITY
FBKHA315X150ALH	315 x 150 NP16	190	300	360	440	30	15	1
FBKHA355X150ALH	355 x 150 NP16	190	300	360	440	30	15	1
FBKHA400X150ALH	400 x 150 NP16	215	300	360	440	30	15	1

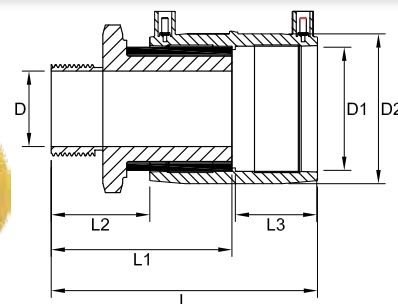
² Only available through **approved fastcut installers**. ³ For use with ALH Flowstop Bagtube. See Fusion website, or contact your local depot or Fusion's National Sales Office on +44 (0)1246 455998 to obtain a list of approved installers.

MALE TRANSITION COUPLER

PE100 Black - Gas 10 Bar / Water PN16

PE80 Yellow - Gas 6 Bar

Please see technical specifications on page 8 with regard to gas fitting ratings



FITTING CODE	FITTING SIZE	L (mm)	L1 (mm)	L2 (mm)	D (mm)	FUSION TIME (secs)	COOLING TIME (mins)	WEIGHT (kg)	BOX QUANTITY
ZC*A25X0.75	25mm x ¾"	114	79	34	17	30	3	0.4	60
ZC*A32X0.5	32mm x ½"	114	79	34	23	45	3	0.425	50
ZC*A32X0.75	32mm x ¾"	114	79	34	23	45	3	0.425	50
ZC*A32X1	32mm x 1"	114	79	34	23	45	3	0.426	50
ZC*A32X1.3	32mm x 1¼"	114	79	34	23	45	3	0.431	50
ZC*A32X1.5	32mm x 1½"	114	79	34	23	45	3	0.431	50
ZC*A40X1	40mm x 1"	126	81	34	29	40	5	0.468	30
ZC*A40X1.3	40mm x 1¼"	126	83	34	29	40	5	0.468	30
ZC*A40X1.5	40mm x 1½"	126	83	34	29	40	5	0.468	30
ZC*A40X2	40mm x 2"	126	88	34	29	40	5	0.471	30
ZC*A50X1	50mm x 1"	134	86	34	38	80	5	0.418	20
ZC*A50X1.3	50mm x 1¼"	136	88	36	38	80	5	0.548	20
ZC*A50X1.5	50mm x 1½"	136	88	36	38	80	5	0.548	20
ZC*A50X2	50mm x 2"	141	93	41	38	80	5	0.569	15
ZC*A63X1.3	63mm x 1¼"	154	97	36	48	35	3	0.704	15
ZC*63X1.5	63mm x 1½"	154	97	36	48	35	3	0.704	15
ZC*63X2	63mm x 2"	159	102	41	48	35	3	0.894	15

* for fitting code explanation see table on page 3

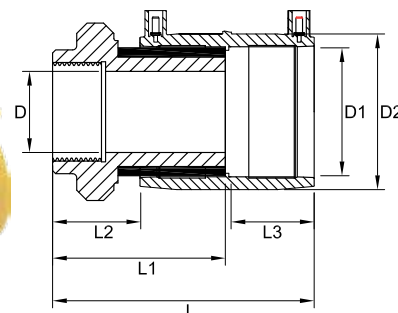
For D1, D2 and L3 dimensions see coupler table on page 12

FEMALE TRANSITION COUPLER

PE100 Black - Gas 10 Bar / Water PN16

PE80 Yellow - Gas 6 Bar

Please see technical specifications on page 8 with regard to gas fitting ratings



FITTING CODE	FITTING SIZE	L (mm)	L1 (mm)	L2 (mm)	D (mm)	FUSION TIME (secs)	COOLING TIME (mins)	WEIGHT (kg)	BOX QUANTITY
XC*A25X0.75	25mm x ¾"	106	68	26	17	30	3	0.4	60
XC*A32X1	32mm x 1"	106	68	26	23	45	3	0.426	50
XC*A40X1	40mm x 1"	116	73	26	29	40	5	0.418	30
XC*A40X1.3	40mm x 1¼"	116	73	26	29	40	5	0.418	30
XC*A40X1.5	40mm x 1½"	116	73	26	29	40	5	0.408	30
XC*A50X1.5	50mm x 1½"	126	78	26	38	80	5	0.588	20
XC*A50X2	50mm x 2"	126	78	26	38	80	5	0.588	15
XC*63X1.5	63mm x 1½"	148	91	30	48	35	3	0.924	15
XC*63X2	63mm x 2"	148	91	30	48	35	3	0.894	15

* for fitting code explanation see table on page 3

For D1, D2 and L3 dimensions see coupler table on page 12

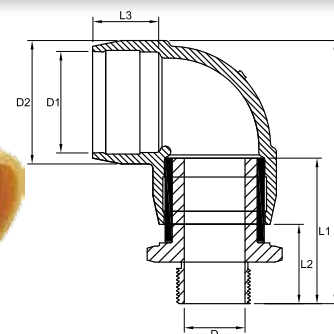
Electrofusion fittings

MALE TRANSITION 90° ELBOW

PE100 Black - Gas 10 Bar / Water PN16

PE80 Yellow - Gas 6 Bar

Please see technical specifications on page 8 with regard to gas fitting ratings



FITTING CODE	FITTING SIZE	L (mm)	L1 (mm)	L2 (mm)	D (mm)	FUSION TIME (secs)	COOLING TIME (mins)	WEIGHT (kg)	BOX QUANTITY
ZE*A25X900.75	25mm x ¾"	118	79	26	17	35	3	0.22	30
ZE*A32X900.5	32mm x ½"	118	79	34	23	45	3	0.297	30
ZE*A32X900.75	32mm x ¾"	118	79	34	23	45	3	0.297	30
ZE*A32X901	32mm x 1"	118	79	34	23	45	3	0.297	30
ZE*A32X901.3	32mm x 1¼"	118	79	34	23	45	3	0.321	3
ZE*A32X901.5	32mm x 1½"	118	79	34	23	45	3	0.321	30
ZE*A40X901	40mm x 1"	151	81	34	29	40	5	0.71	25
ZE*A40X901.3	40mm x 1¼"	153	83	36	29	40	5	0.71	25
ZE*A40X901.5	40mm x 1½"	153	83	36	29	40	5	0.7	25
ZE*A50X901	50mm x 1"	161	86	34	38	80	5	0.511	25
ZE*A50X901.3	50mm x 1¼"	153	88	36	38	80	5	0.641	25
ZE*A50X901.5	50mm x 1½"	153	88	36	38	80	5	0.641	25
ZE*A63X901.3	63mm x 1¼"	177	97	36	38	35	3	0.884	15
ZE*A63X901.5	63mm x 1½"	182	102	41	48	35	3	1.074	15
ZE*A63X902	63mm x 2"	177	97	36	48	35	3	0.884	15

* for fitting code explanation see table on page 3

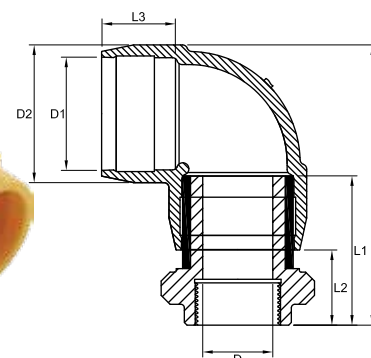
For D1, D2 and L3 dimensions see 90° elbow table on page 13

FEMALE TRANSITION 90° ELBOW

PE100 Black - Gas 10 Bar / Water PN16

PE80 Yellow - Gas 6 Bar

Please see technical specifications on page 8 with regard to gas fitting ratings



FITTING CODE	FITTING SIZE	L (mm)	L1 (mm)	L2 (mm)	D (mm)	FUSION TIME (secs)	COOLING TIME (mins)	WEIGHT (kg)	BOX QUANTITY
XE*A25X900.75	25mm x ¾"	110	68	26	17	35	3	0.4	30
XE*A32X901	32mm x 1"	110	68	26	23	45	3	0.467	30
XE*A40X901	40mm x 1"	143	73	26	29	40	5	0.66	25
XE*A40X901.3	40mm x 1¼"	143	73	26	29	40	5	0.66	25
XE*A40X901.5	40mm x 1½"	143	73	26	29	40	5	0.66	25
XE*A50X901.5	50mm x 1½"	143	78	26	38	80	5	0.581	25
XE*A63X901.5	63mm x 1½"	171	91	30	48	35	3	1.104	15
XE*A63X902	63mm x 2"	171	91	30	48	35	3	10.24	15

* for fitting code explanation see table on page 3

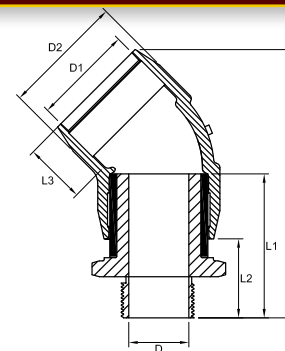
For D1, D2 and L3 dimensions see 90° elbow table on page 13

MALE TRANSITION 45° ELBOW

PE100 Black - Gas 10 Bar / Water PN16

PE80 Yellow - Gas 6 Bar

Please see technical specifications on page 8 with regard to gas fitting ratings



FITTING CODE	FITTING SIZE	L (mm)	L1 (mm)	L2 (mm)	D (mm)	FUSION TIME (secs)	COOLING TIME (mins)	WEIGHT (kg)	BOX QUANTITY
ZE*A32X451	32mm x 1"	142	72	34	23	45	3	0.349	25
ZE*A32X451.3	32mm x 1 1/4"	142	72	34	23	45	3	0.521	25
ZE*A32X451.5	32mm x 1 1/2"	142	72	34	23	45	3	0.521	25
ZE*A40X451	40mm x 1"	143	81	34	29	40	5	0.488	25
ZE*A40X451.3	40mm x 1 1/4"	145	83	36	29	40	5	0.488	25
ZE*A40X451.5	40mm x 1 1/2"	145	83	36	29	40	5	0.478	25
ZE*A50X451	50mm x 1"	159	86	34	38	80	5	0.446	25
ZE*A50X451.3	50mm x 1 1/4"	161	88	36	38	80	5	0.576	25
ZE*A50X451.5	50mm x 1 1/2"	161	88	36	38	80	5	0.576	25
ZE*A63X451.3	63mm x 1 1/4"	146	97	36	38	35	3	0.778	15
ZE*A63X451.5	63mm x 1 1/2"	146	97	36	48	35	3	0.778	15
ZE*A63X452	63mm x 2"	160	102	41	48	35	3	0.968	15

* for fitting code explanation see table on page 3

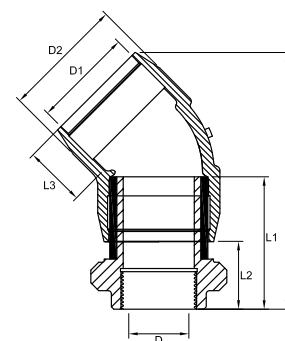
For D1, D2 and L3 dimensions see 45° elbow table on page 14

FEMALE TRANSITION 45° ELBOW

PE100 Black - Gas 10 Bar / Water PN16

PE80 Yellow - Gas 6 Bar

Please see technical specifications on page 8 with regard to gas fitting ratings



FITTING CODE	FITTING SIZE	L (mm)	L1 (mm)	L2 (mm)	D (mm)	FUSION TIME (secs)	COOLING TIME (mins)	WEIGHT (kg)	BOX QUANTITY
XE*A32X451	32mm x 1"	134	68	26	23	45	3	0.519	25
XE*A40X451	40mm x 1"	135	73	26	29	40	5	0.438	25
XE*A40X451.3	40mm x 1 1/4"	135	73	26	29	40	5	0.438	25
XE*A40X451.5	40mm x 1 1/2"	135	73	26	29	40	5	0.428	25
XE*A50X451.5	50mm x 1 1/2"	151	78	26	38	80	5	0.516	25
XE*A63X451.5	63mm x 1 1/2"	139	91	30	48	35	3	0.996	15
XE*A63X452	63mm x 2"	139	91	30	48	35	3	0.918	15

* for fitting code explanation see table on page 3

For D1, D2 and L3 dimensions see 45° elbow table on page 14

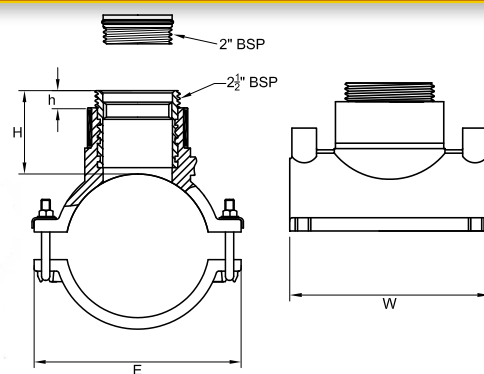
Electrofusion fittings

BALLOON SADDLE

PE100 Black - Gas 10 Bar / Water PN16

Please see technical specifications on page 8 with regard to gas fitting ratings

Red cap protects external thread



FITTING CODE	FITTING SIZE	H (mm)	h (mm)	W (mm)	E (mm)	FUSION TIME (secs)	COOLING TIME (mins)	WEIGHT (kg)	BOX QUANTITY
XBBKHA90X2.5	90mm x 2½"	70	15	118	151	160	10	7.68	10
XBBKHA110X2.5	110mm x 2½"	100	15	118	180	120	10	7.8	8
XBBKHA125X2.5	125mm x 2½"	63	15	165	180	120	10	7.76	8
XBBKHA160X2.5	160mm x 2½"	84	15	215	236	120	10	8.24	2
XBBKHA180X2.5	180mm x 2½"	74	15	215	236	120	10	8.16	2
XBBKHA200X2.5	200mm x 2½"	82	15	165	263	120	10	8.81	3
XBBKHA225X2.5	225mm x 2½"	80	15	165	300	120	10	8.94	2
XBBKHA250X2.5	250mm x 2½"	86	15	165	317	120	10	9.06	2

COUPLER WITH EXCESS FLOW VALVE

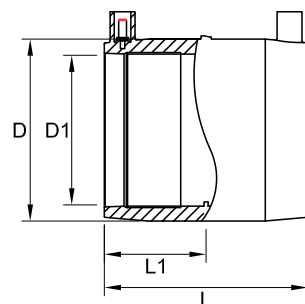
PE100 Black - Gas

PE80 Yellow - Gas

Excess flow valves are available for a range of flows and pressures (see examples in table below). Please contact the UK or International sales hotlines to discuss your requirements (see p30-31)



also available in yellow



FITTING CODE	FITTING SIZE	L (mm)	L1 (mm)	D (mm)	D1 (mm)	FUSION TIME (secs)	COOLING TIME (mins)	WEIGHT (kg)	BOX QUANTITY
C*A20EFV	20mm	77	37.5	29	20	35	3	0.033	80
C*A25EFV	25mm	77	37.5	33.5	25	30	3	0.037	80
C*A32EFV	32mm	77	37.5	43	32	45	3	0.057	75/100

REDUCER WITH EXCESS FLOW VALVE

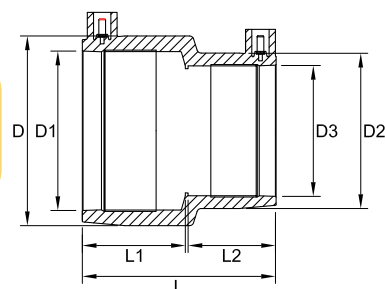
PE100 Black - Gas

PE80 Yellow - Gas

Excess flow valves are available for a range of flows and pressures (see examples in table below). Please contact the UK or International sales hotlines to discuss your requirements (see p30-31)



also available in yellow



FITTING CODE	FITTING SIZE	L (mm)	L1 (mm)	D (mm)	D1 (mm)	L2 (mm)	D2 (mm)	D3 (mm)	FUSION TIME (secs)	COOLING TIME (mins)	WEIGHT (kg)	BOX QUANTITY
R*A25X20EFV	25 x 20mm	77	38.5	34	25	36.5	29	20	35	3	0.035	80
R*A32X20EFV	32 x 20mm	77	38.5	43	32	36.5	29	20	40	3	0.048	75
R*A32X25EFV	32 x 25mm	77	38.5	43	32	36.5	34	25	30	3	0.052	75

Pressure / flow specifications

Pressure, flow specifications										
	35mbar	at pressure 75mbar			at pressure 2bar			at maximum pressure 4bar		
Type	max. nominal flow air (m³/h)	max. nominal flow nat. gas (m³/h)	trip flow min. (m³/h)	trip flow max. (m³/h)	max. nominal flow nat. gas (m³/h)	trip flow min. (m³/h)	trip flow max. (m³/h)	nominal flow nat. gas (m³/h)	trip flow min. (m³/h)	trip flow max. (m³/h)
GS25Z	13	17	21	25	28	36	41	37	46	53
GS20Z	7	9	12	13	15	19	22	20	25	29

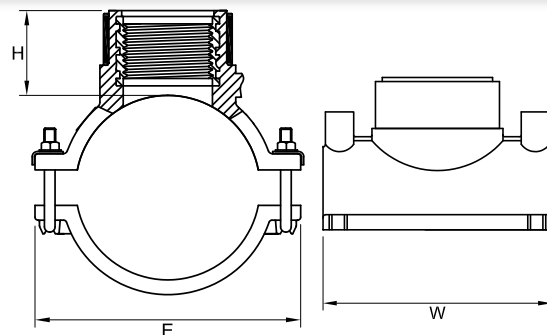
GS25Z / GS20Z	at minimum pressure 1bar	at maximum pressure 4bar	remarks
Bypass flow rate (approx) with large orifice	0.6 m³/h natural gas	1.5 m³/h natural gas	Transco requirements



TRANSITION SADDLE

PE100 Black - Gas 10 Bar / Water PN16

Please see technical specifications on page 8 with regard to gas fitting ratings



FITTING CODE	FITTING SIZE	H (mm)	W (mm)	E (mm)	FUSION TIME (secs)	COOLING TIME (mins)	WEIGHT (kg)	BOX QUANTITY
XBBKHA63X1.3	63mm x 1¼"	90	118	102	120	10	0.75	10
XBBKHA63X1.5	63mm x 1½"	90	118	102	120	10	0.7	10
XBBKHA90X1.3	90mm x 1¼"	57	118	156	160	10	1.2	10
XBBKHA90X1.5	90mm x 1½"	57	118	156	160	10	1.17	10
XBBKHA90X2	90mm x 2"	57	118	156	160	10	1.04	10
XBBKHA110X1.3	110mm x 1¼"	56	118	180	120	10	1.16	10
XBBKHA110X1.5	110mm x 1½"	56	118	180	120	10	1.135	8
XBBKHA110X2	110mm x 2"	56	118	180	120	10	1.16	8
XBBKHA125X1.3	125mm x 1¼"	58	118	180	120	10	1.12	8
XBBKHA125X1.5	125mm x 1½"	58	118	180	120	10	1.079	8
XBBKHA125X2	125mm x 2"	58	118	180	120	10	1.12	8
XBBKHA160X1.3	160mm x 1¼"	62	118	236	120	10	1.7	2
XBBKHA160X1.5	160mm x 1½"	62	118	236	120	10	1.6	2
XBBKHA160X2	160mm x 2"	62	118	236	120	10	1.45	2
XBBKHA180X1.3	180mm x 1¼"	60	118	236	120	10	1.7	2
XBBKHA180X1.5	180mm x 1½"	60	118	236	120	10	1.6	2
XBBKHA180X2	180mm x 2"	60	118	236	120	10	1.5	2
XBBKHA200X2	200mm x 2"	67	165	263	120	10	2.17	3
XBBKHA225X2	225mm x 2"	66	165	288	120	10	2.3	2
XBBKHA250X2	250mm x 2"	74	165	316	120	10	2.42	2

PE - STEEL TRANSITION PIECE (weldable)

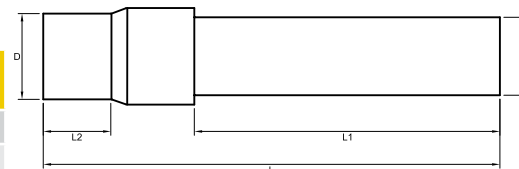
PE100 Black - Gas 10 Bar

PE80 Yellow - Gas 6 Bar

Please see technical specifications on page 8 with regard to gas fitting ratings



also available
in yellow



FITTING TYPE	D x d	L (mm)	L1 (mm)	L2 (mm)	WEIGHT (kg)	BOX QUANTITY
PES*25X0.75W	25mm x ¾"	432	300	67	0.8	25
PES*32X1W	32mm x 1"	440	300	72	1.25	20
PES*40X1.3W	40mm x 1¼"	445	300	78	1.7	12
PES*50X1.5W	50mm x 1½"	470	300	85	2.15	8
PES*63X2W	63mm x 2"	480	300	90	3.05	6
PES*75X2.5W	75mm x 2½"	522	300	108	3.75	4
PES*90X3W	90mm x 3"	540	300	120	5.2	3
PES*110X4W	110mm x 4"	575	315	125	8.8	2
PES*125X4W	125mm x 4"	600	315	125	9.1	1
PES*140X5W	140mm x 5"	615	315	140	12.5	1
PES*160X6W	160mm x 6"	635	315	145	15.8	1
PES*180X6W	180mm x 6"	650	315	155	16.5	1

* for fitting code explanation see table on page 3

Electrofusion fittings

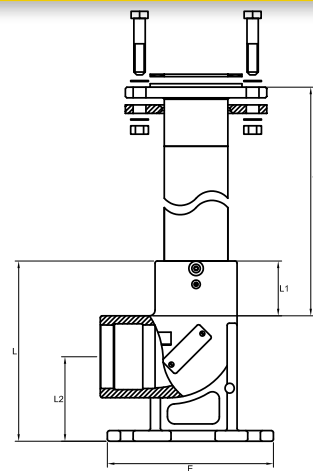
DUCKFOOT BEND KIT

PE100 Black - Water PN16

Kit: E/F bend, coupler¹, spigot reducer¹, riser, flange gasket, backing ring², bolts², nuts², washers²

¹ Spigot reducer and coupler in all kits except 90 x 80NP16

² Rilsan coated

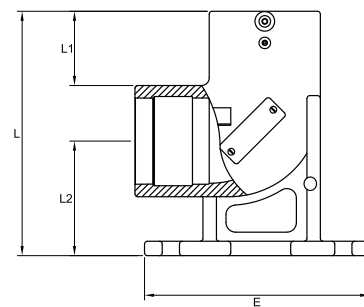


FITTING CODE	FITTING SIZE	L (mm)	L1 (mm)	L2 (mm)	A (mm)	E (mm)	FUSION TIME (secs)	COOLING TIME (mins)	WEIGHT (kg)	BOX QUANTITY
DFBBKHA63X80KR	63 x 80NP16	257	77	120	455	232	140	10	7.7	1
DFBBKHA90X80KR	90 x 80NP16	257	77	120	455	232	140	10	7.5	1
DFBBKHA110X80KR	110 x 80NP16	257	77	120	455	232	140	10	8.02	1
DFBBKHA125X80KR	125 x 80NP16	257	77	120	455	232	140	10	8.07	1
DFBBKHA160X80KR	160 x 80NP16	257	77	120	455	232	140	10	8.75	1
DFBBKHA180X80KR	180 x 80NP16	257	77	120	455	232	140	10	9.8	1

DUCKFOOT BEND

PE100 Black - Water PN16

Base unit: EF bend only



FITTING CODE	FITTING SIZE	L (mm)	L1 (mm)	L2 (mm)	E (mm)	FUSION TIME (secs)	COOLING TIME (mins)	WEIGHT (kg)	BOX QUANTITY
DFBBKHA90X90	90mm x 90deg	257	77	120	232	140	10	2	3
DFBBKHA110X90	110mm x 90deg	257	77	120	232	140	10	2.5	3

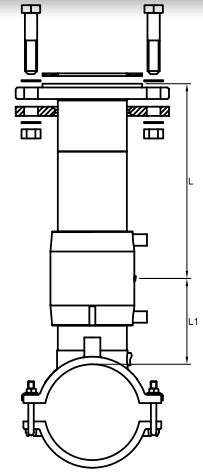
HYDRANT BRANCH SADDLE KIT

PE100 Black - Water PN16

Kit: E/F hydrant branch saddle, coupler¹, riser, flange gasket, backing ring², bolts², nuts², washers²

¹ Coupler in kit is 90mm - see page 12 for dimensional details

² Rilsan coated



FITTING CODE	FITTING SIZE	L (mm)	L1 (mm)	FUSION TIME (secs)	COOLING TIME (mins)	WEIGHT (kg)	BOX QUANTITY
HBSHA90X80KR	90mm x 80K	455	124	160	10	6.6	1
HBSHA110X80KR	110mm x 80K	455	121	120	10	6.55	1
HBSHA125X80KR	125mm x 80K	455	114	120	10	6.5	1
HBSHA160X80KR	160mm x 80K	455	110	120	10	7.64	1
HBSHA180X80KR	180mm x 80K	455	100	120	10	7.6	1
HBSHA200X80KR	200mm x 80K	455	115	120	10	10	1
HBSHA225X80KR	225mm x 80K	455	112	120	10	10.2	1
HBSHA250X80KR	250mm x 80K	455	120	120	10	10.27	1

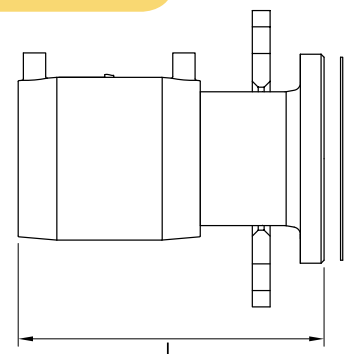
STUB FLANGE KIT

PE100 Black - Gas 10 Bar / Water PN16

PE80 Yellow - Gas 6 Bar

Please see technical specifications on page 8 with regard to gas fitting ratings

Kit: Coupler, stub flange, backing ring, gasket



FITTING CODE WATER	FITTING CODE GAS	FITTING SIZE	COUPLER SIZE	L (mm) (nominal)	FUSION TIME (secs)	COOLING TIME (mins)	WEIGHT (kg)	BOX QUANTITY
SFHK63K	SFY63K	63 x 50NP16	63	181	80	5	2.07	1
SFHK90K	SFY90K	90 x 80NP16	90	217	120	10	5.05	1
SFHK110K	----	110 x 100NP16	110	246	200	10	4.77	1
SFHK125K	SFY125K	125 x 100NP16	125	151	220	10	4.71	1
SFHK160K	----	160 x 150NP16	160	269	180	10	9.71	1
SFHK180K	SFY180K	180 x 150NP16	180	284	300/360	20	9.84	1
SFHK225K	----	225 X 200NP16	225	310	600	30	16.22	1

FUSION INTERNATIONAL DIVISION

Smeckley Wood Close
Chesterfield Trading Estate
Chesterfield
Derbyshire
S41 9PZ

DISTRIBUTOR



www.pca.net.au

Pipe Couplings (A/Asia) PTY LTD
16 Britton Street Smithfield

www.pca.net.au

giulio@pca.net.au



Fusamatic fittings are sold across the world through Fusion's extensive network of agents, distributors and joint-venture companies. Through this network, Fusion has sold its fittings from Holland to Hong Kong and Portugal to Pakistan. Fusamatic fittings have even reached Outer Mongolia!

Fusion has twice won the 'Gas Industry International Business Development Award' in recognition of its success in international markets.

BATCH MANUFACTURING OF ELECTROFUSION FITTINGS

Creating world class electrofusion fittings requires a portfolio of diverse skills and technologies: design engineering, injection moulding, automation, electrical engineering, quality control and testing.

You can access these skills through Fusion's batch manufacturing capability.

If you have a significant demand for a specific fitting outside the range detailed in this catalogue please contact Fusion's international team on +44 (0)1246 268666 to discuss your requirements.

